

橡塑導向板 (可調式) 系列

Tactiles in soft rubber series

尺寸	: 300mm x 300mm x 2+5mm(T.)	顏色	:   
物料	: 防滑靜摩擦系數ASTM C1028-07, 抗火功能BS476 Part 7 Class 2, BS EN 13501-1	Colour	:   
Dimension	: 300mm x 300mm x 2+5mm(T.)		
Material	: Static Coefficient of Friction ASTM C1028-07 Fire Resistant features BS 476 Part 7 Class 2, BS EN 13501-1		

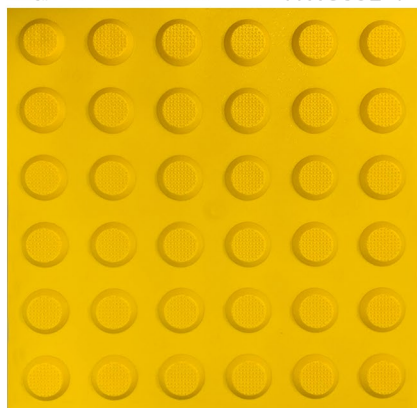


產品名稱： 警示導向地板
Product Name: Warning tactile

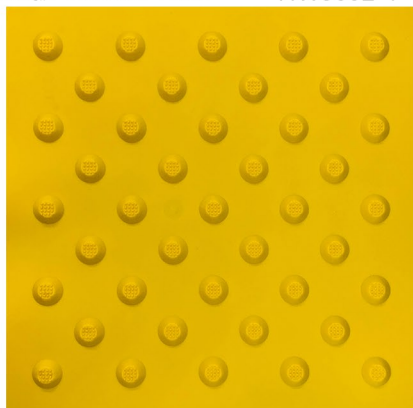
產品名稱： 位置導向地板
Product Name: Positional tactile

產品名稱： 方向j導向地板
Product Name: Directional tactile

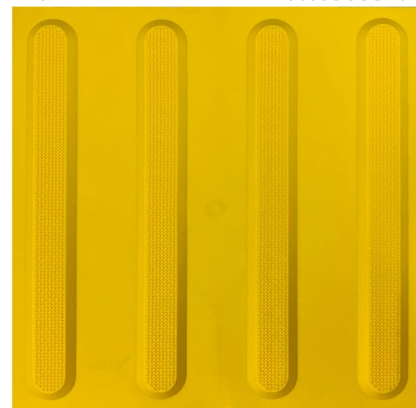
型號 Model No.: HWS001-Y



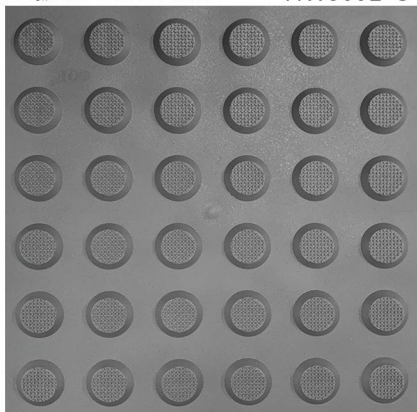
型號 Model No.: HWS002-Y



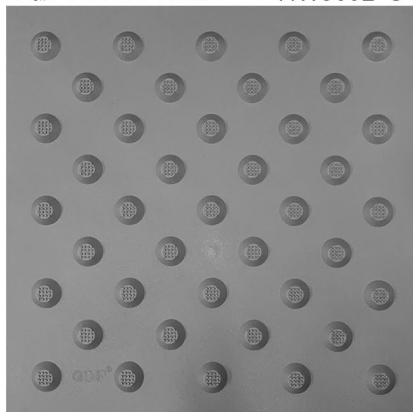
型號 Model No.: HWS003-Y



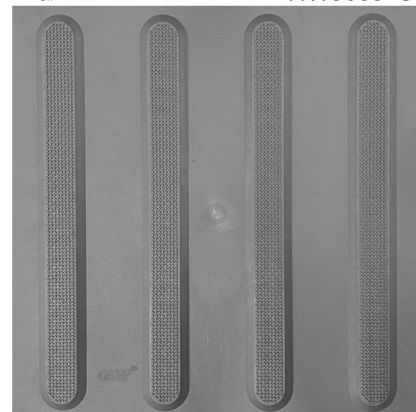
型號 Model No.: HWS001-G



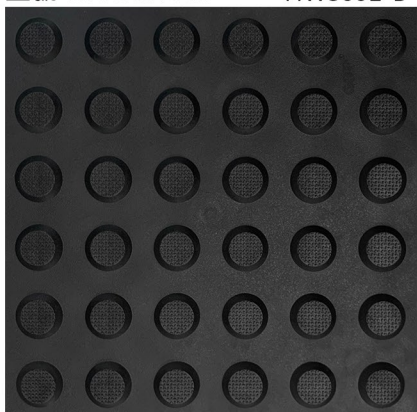
型號 Model No.: HWS002-G



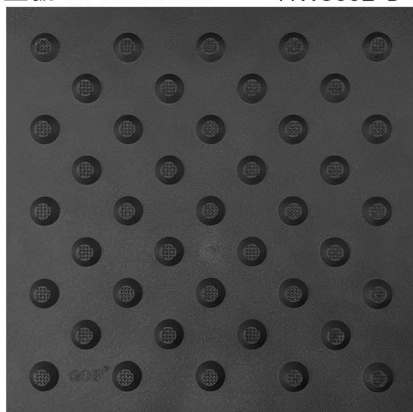
型號 Model No.: HWS003-G



型號 Model No.: HWS001-B



型號 Model No.: HWS002-B



型號 Model No.: HWS003-B

