



Luxury Vinyl Flooring

# Why Luxury Vinyl flooring?

## Healthy and Good Indoor Air Quality

Low VOCs emission with Floor Score certification.

## Durable and excellent wear resistance

With super wear resistant wear layer and strong coating, it can be used for residential, commercial and industrial.

## Water Proof

Low water absorption makes it sturdy in high moisture circumstance. It can be also a good choice for kitchen and bathroom.

## Low Maintenance

No need for initial coating and just wipe with wet mop and mild cleanser in daily maintenance.

## Comfortable and Safe

It provides warm step feeling, less step noise and reduce the risk of falling down. Good anti-slipping performance makes it safer than other kind of hard surface flooring.

## Good Fire Behavior

Class B fire resistance enable the application for common use of commercial and residential spaces.

## More Design Options Inspired By Nature

Authentic wood, stone and textile patterns provide abundant design options for design of your room space.

## 100% Recyclable

All material can be recycled in production or after product lifetime, which contributes to protect our earth and save resources.



## Standards

BS EN 649  
ASTM F1700



## Dimensional Stability

EN434



## Flexibility

EN435



## Resistance to Heat

ASTM F1514



## Flammability

ASTM E-84-98



## Slip Resistance

EN 13893



## Colour fastness to Light

ISO 105B02



## Resistance to Chemicals

ASTM F1700 Clause 6.8



## Resistance to Stain

EN423



## Abrasion Resistance

EN 660-2



## Castor Chair Suitability

EN 425



## Acoustical Impact

Impact Insulation Class  
ASTM E2179



## Environmental

Recyclable

# Content

About Tsinly	01
Certification	02
Product Category	03
• Dry back	03
• Strong Click	07
• Loose Lay	11
• Acoustic	15
Pattern and design	19
• Wood	19
• Stone	37
• Abstract	49
• Textile	51

# About Tsinly

Tsinly Green Material Technologies Co., Ltd. is the subsidiary of Shenzhen Eastern Development Group, which is a big group with annually income more than 1 billion us dollars in multiple businesses on real estate, construction, flooring manufacture juice manufacture, and ect.

TSINLY has been focusing on manufacturing and marketing of rubber flooring, Luxury vinyl flooring since its foundation. And it always remembers its mission on the environmental friendly green materials for building and decoration.

There are three sub-firm factories, two for rubber flooring and one for LVT floor. We are the only one manufacturer in China with both factories of rubber floor and vinyl floor, which enable us to develop and design products with advantage of both.

Tsinly Green Building Material Technologies (Dongguan) Co., Ltd. is the 100% owned factory on luxury vinyl floor manufacturing. Founded in 2008, it has been researching and producing LVT for 10 years and exporting to more than 20 countries all around the world. This factory is producing Dry back, Strong Click, Loose lay vinyl and Acoustic LVT in different size and gauges. It got ISO9001, ISO14001, CE and Floor Score certification.

Shanxi Tsinly Rubber Co., Ltd. is also the 100% owned factory of TSINLY, who is

located in Shanxi province of China. It is one of the biggest rubber flooring factories in China with annually production capacity more than 1 million square meter of rubber roll or rubber tile flooring. This factory already got certification of ISO 9001, ISO 14001, CE, DNV-GL, CSS. The products have been used in a lot of big project in China.

Beijing Shentehuake Rubber Co., Ltd is the 75% owned factory of TSINLY, who is the expert on rubber tiles for special application, such as rubber tile for skating rink, swimming pool and fitting room.

We are looking for partners around the world for any OEM, ODM cooperation. And we are always glad to get partners to market and sell our own brand TSINLY.

Tsinly will always work hard to be the best manufacturer of rubber flooring and LVT flooring.



# Certification



ISO9001 refers to a quality management system, ensuring the quality of product from development, design, production, installation and service. It has a complete set of requirements for quality assurance so as to ensure the quality of product.



ISO14001 refers to an environment management system, a system and measure for environment protection, and a set of regulations with consistency recognized in the globe. Based on it, various organizations around the world build, implement, supervise and improve their environment management systems.



In EU market the mark of “CE” means a compulsory certification mark, all products produced by enterprises in EU or other countries must be marked with “CE” when circulated in EU market, so as to indicate that they meet the basic requirements of New Methods for Technical Coordination and Standardization of EU.



American indoor air emission standard certification

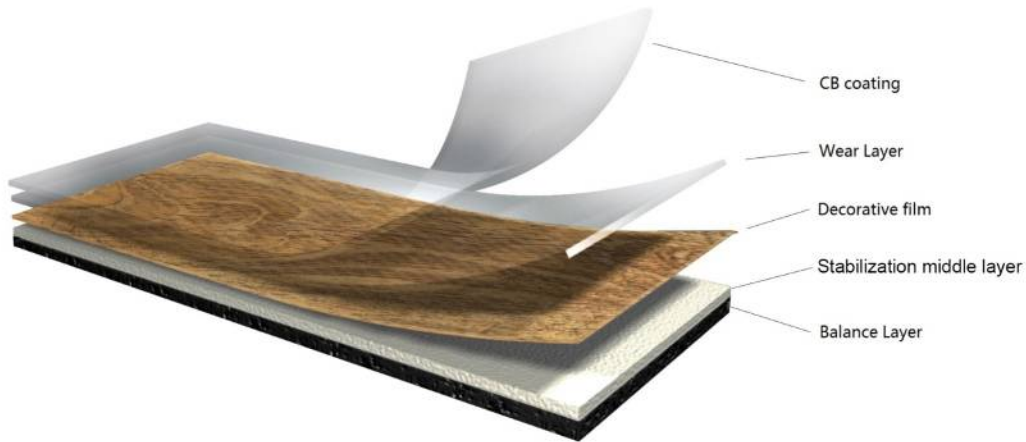
Floorscore is a leading independent certification in the globe: A third-party certification integrating SCS and RFLCI. After strict test and certification, the floor tiles enable indoor air quality to comply with the emission standard.



Certification by American industrial inspection authority

ASTM is an American authority for inspection on industrial standards. It has become the criterion for global industry, environment protection and safety standards. Common test items for PVC tile: ASTM E662 smoke density test, ASTM F925 chemical resistance test, ASTM F510 fire protection test, and ASTM E84-03 abrasive resistance test.

# Dry Back



## 1. CB coating

Thanks to a factory-applied CB coating surface treatment, there is less work for customers to do to care for your floor.

## 2. The Wear Layer

This transparent, extremely dense layer is hard-wearing and protects the decoration of the products. This allows the surface embossing to create a highly authentic effect.

## 3. The Decorative film

Wood, stone, textiles and abstract designs provide abundant choice for the room spaces. Tsinly develop designs together with customers by means of extensive trend research and the commissioning of experienced product designers.

## 4. The stabilization Layer

The good dimensional stability is achieved by this layer by minimizing the effect of surrounding physical properties (e.g temperature fluctuations).

## 5. The Balance Layer

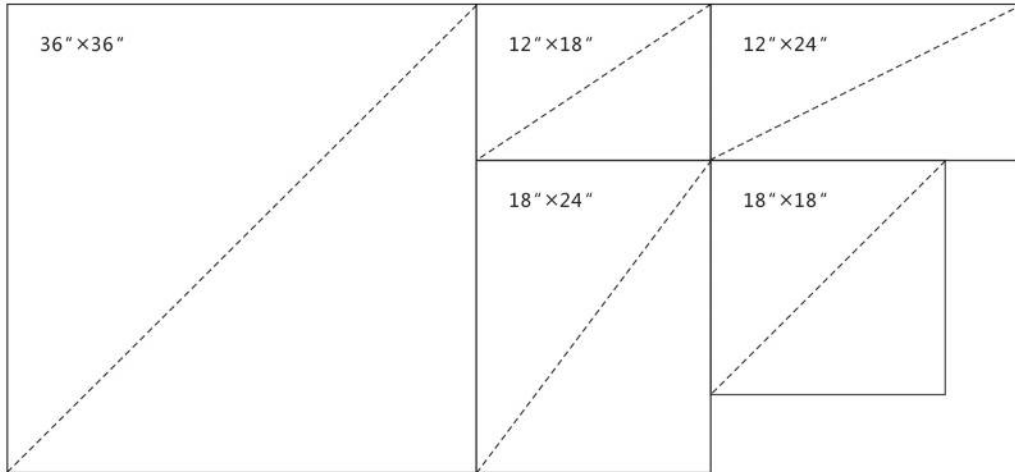
This base layer provides flexibility, anti-curling and anti-aging for the whole .

## Features

- ◇ Authentic nature wood/stone/textile patterns
- ◇ Excellent wear resistant and scratch resistant with wear layer and strong coating
- ◇ Easy maintenance
- ◇ Excellent dimensional stability
- ◇ Different kinds of embossing style for choice
- ◇ Recommend for: residential and commercial decoration.
- ◇ Thickness:2.0~4.0mm
- ◇ Wear layer: 0.15mm, 0.2mm, 0.3mm, 0.5mm, 0.7mm
- ◇ Beveled edge or square edge. \*Beveled edge only available for wear layer thicker than 0.5mm.
- ◇ Installation: Glue down
- ◇ Pattern and color: Choose from our pool or customized acceptable for long term cooperation

# Dry Back

◇ Size available:



9" x 48"

7.25" x 48"

6" x 36"

4" x 36"

4" x 24"



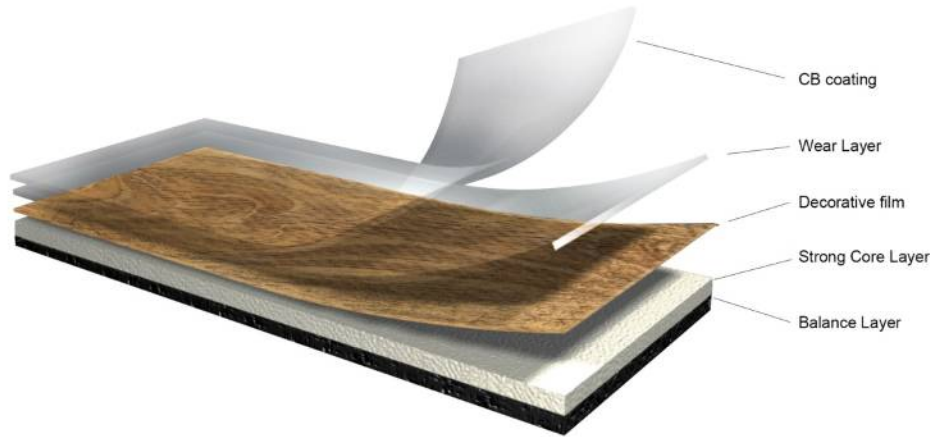
## Technical Data

Product	Dry Back LVT		
Thickness	2.0~4.0mm		
Wear Layer	0.1~0.7mm		
Size Available	4inx24in / 4inx36in / 6inx36in / 7.25inx48in / 9inx48in 12inx18in / 18inx18in / 18inx24in / 36inx36in (1in=25.4mm)		
Item	Standard	Unit	Result
Wear Layer Phthalate content	CPSC-CH-C1001-09.3		Phthalate free
Finish			CB coating
Abrasion	EN 660-2	mm <sup>3</sup>	<2.0 Group T
Dimensional stability after exposure to heat	EN 434 ASTM F2199	%	≤0.15%
Curling after exposure to heat	EN 434	mm	≤1.2mm
Peel strength	EN 431	N/50mm	Res > 38 Com.>45
Flexibility	EN435		No Crack
Castor chair suitable	EN 425		suitable
Color fasten to light	ISO105-B02	-	≥6
Color fasten to heat	ASTM F1514	-	No change
Stain resistance	EN 423	Class	0
Residual Indentation	EN433	-	≤0.1mm
Fire Behavior	EN ISO 9239-1		B <sub>fl</sub> S <sub>1</sub>
VOC emission	CA Section 01350		Pass

\*Specifications listed above are based on averages from manufacturing and may vary within normal industry tolerances.

\*Manufacturing process or material supply may change without notice. But those changes don't affect the product performance.

# Strong Click



## ◇ CB coating

Thanks to a factory-applied CB coating surface treatment, there is less work for customers to do to care for your floor.

## ◇ The Wear Layer

This transparent, extremely dense layer is hard-wearing and protects the decoration of the products. This allows the surface embossing to create a highly authentic effect.

## ◇ The Decorative film

Wood, stone, textiles and abstract designs provide abundant choice for the room spaces. Tsinly develop designs together with customers by means of extensive trend research and the commissioning of experienced product designers.

## ◇ The Strong Core Layer

This special core layer is extremely rigid, strong, water proof and dimensional stable. That features the Tsinly strong click with good performance on dimensional stability and locking strength.

## ◇ The Balance Layer

This base layer provides anti-curling and anti-aging for the whole products.

## Strong Click

◇ **Stronger flexural strength.**

The clicker will not be easily broken by improper installation and also after installation.

◇ **Super water proof.**

Much lower water absorptive than wood floor and even WPC planks, which makes it is suitable for high moisture space.

◇ **Perfect dimensional stability.**

Dimension changes less than 0.06% after exposure to heat testing, which enables the Tsinly Strong click used in different kind of climate.

◇ **Recyclable and eco-friendly.**

The material is 100% recyclable. The installation is glueless.

◇ **Harder and more Rigid.**

It is harder and more rigid than normal vinyl tiles and planks, which makes it acceptable for slightly uneven subfloor.

◇ **Strong peel strength**

Compared to the SPC as you see, the Tsinly Strong click has much stronger peel strength. There is no risk of upper layers peeled off.

The feature described above makes the Tsinly Strong click much better than normal vinyl click planks on dimensional stability, water proofing, and locking strength.

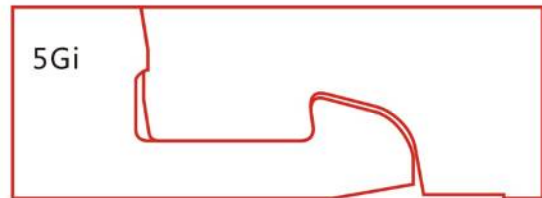
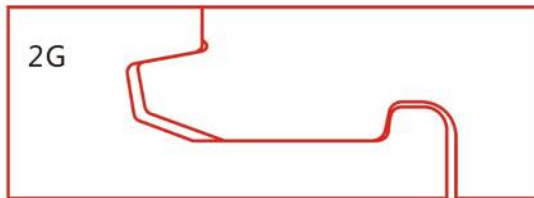
# Strong Click

## Valinge Click System

Our click system are licensed by Valinge



Long side all with 2G click. The short end with 2G click system for thickness less than 4.0mm, and optional with 5Gi or 2G click system for planks/tiles no less than 4.0mm thick.



Thickness: 3.5mm, 4mm, 4.5mm, 5mm

Wear layer: 0.15mm, 0.3mm, 0.5mm

Pattern and color: Choose from our pool or customized acceptable for long term cooperation

◇ Size available:

307mm × 600mm

150mm × 935mm

180mm × 1220mm

# Strong Click

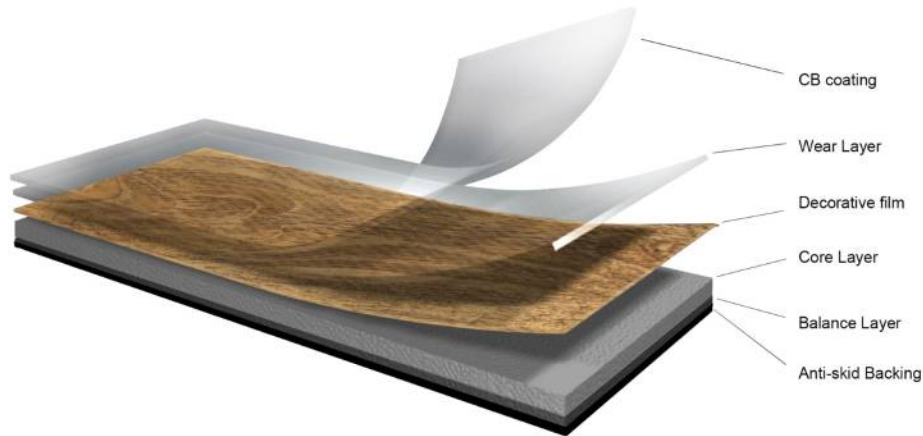
## Technical Data

Product	Strong Click		
Thickness	3.5mm, 4.0mm, 4.5mm, 5.0mm		
Wear Layer	0.15mm, 0.3mm, 0.5mm		
Size Available	150x935mm; 180x1220mm; 307x600mm		
Item	Standard	Unit	Result
Wear Layer Phthalate content	CPSC-CH-C1001-09.3		Phthalate free
Finish			CB coating
Abrasion	EN 660-2	mm <sup>3</sup>	<2.0 Group T
Dimensional stability after exposure to heat	EN 434 ASTM F2199	%	≤0.12%
Curling after exposure to heat	EN 434	mm	≤1.2mm
Peel strength	EN 431	N/50mm	Res > 38 Com. > 45
Flexibility	EN435		No Crack
Castor chair suitable	EN 425		suitable
Color fasten to light	ISO105-B02	-	≥6
Color fasten to heat	ASTM F1514	-	No change
Stain resistance	EN 423	Class	0
Residual Indentation	EN433	-	≤0.1mm
Fire Behavior	EN ISO 9239-1		B <sub>fl</sub> S <sub>1</sub>
VOC emission	CA Section 01350		Pass

\* Specifications listed above are based on averages from manufacturing and may vary within normal industry tolerances.

\*Manufacturing process or material supply may change without notice. But those changes don't affect the product performance.

# Loose Lay



◇ CB coating

◇ Wear Layer

◇ Decorative film

◇ Core Layer

This special core layer is extremely soft, water proof and dimensional stable. That makes the Tsiny Loose Lay with good performance on dimensional stability.

◇ The Balance Layer

◇ Anti skid backing

This special anti-skid backing together with the honeycomb embossing will allow the Tsiny Loose Lay stay on the sub floor not easily moved by stepping.



## Features and Benefit

### **DIY Installation**

Tsinly Loose lay vinyl tile and planks can be laid quickly and simply on almost any subfloor or existing floor with little or no special preparation, including newly laid wet concrete areas. This makes your flooring installation free of glue and adhesive. You don't have to be worried about the high cost of installation material and labor, because you can even do it by yourself.

### **Special formula and backing**

The filler of Tsinly loose lay tile/plank is special and different from the normal vinyl tiles/planks that makes the tile/plank heavier and more stable than other normal tile/planks. When it is laid on the floor, it is always flat and hard to move horizontally. The backing of the tile/plank is specially treated with unique soft acetabula emboss which makes better contact with the subfloor. The products will stick to the sub-floor though no glue is needed, hence creating a better loose lay effect.

### **Ultra water proof and dimensional stable**

Tsinly Loose Lay LVT is completely water proof. Tried to immersed it in water for several months and it came out without any change on dimension and appearance. It is suitable for a moisture environment. No gapping, no curling, and no expansion after laid on the floor base even in wet areas and high temperatures.

### **Easy repair and reuse**

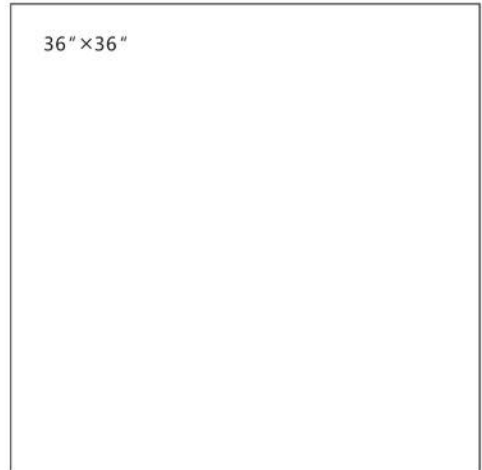
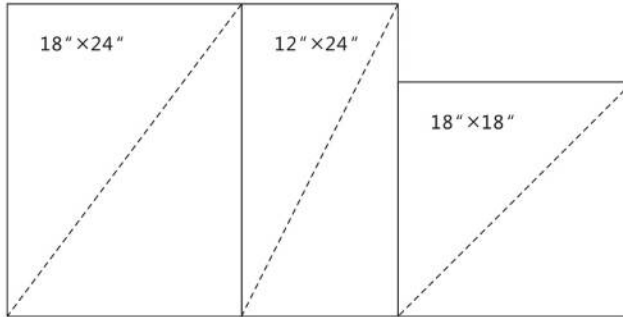
As Loose Lay is not stuck to the subfloor nor the tile/plank itself, it can really be used again and again elsewhere. Installation and removal are very easy and convenient. Besides, you don't have to worry about the damage of the click during the uninstallation and place in another room—because no click is needed.

### **Low VOCs emission**

Strict control on raw material and manufacture process, no adhesive is needed during production and installation, all makes it very low emission of VOCs. Thus it provides good indoor air quality.

## Loose Lay

◇ Size available:



Thickness: 4mm, 4.5mm, 5mm

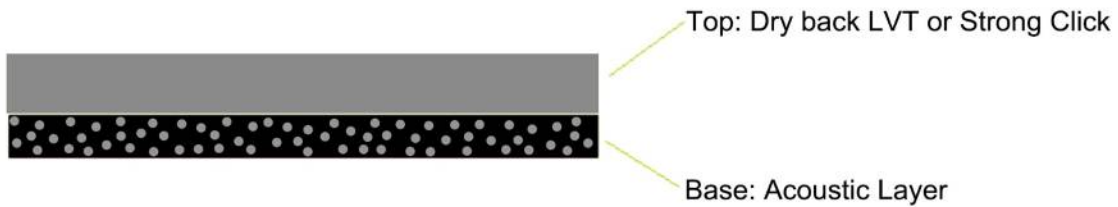
Wear layer: 0.2mm, 0.3mm, 0.5mm

Pattern and color: Choose from our pool or customized acceptable for long term cooperation





# Acoustic



- ◇ **Sound Proofing** – ASTM E2179  $\Delta IIC \geq 22$ , Less step noise.
- ◇ **Safe and Healthy**– No toxic and harmless. Low VOC emission. Conform to CA Section 01350.
- ◇ **Fire resistant** – Class B1
- ◇ **Energy saving** – The backing is heat absorptive and insulating to keep the room warm in winter or cool in summer.
- ◇ **Impact absorptive** – Reducing the step noise and the risk of falling down. Help to keep safe, especially for old and kids.

## Two structure available

- Acoustic Dry back
- Acoustic Strong click

# Acoustic

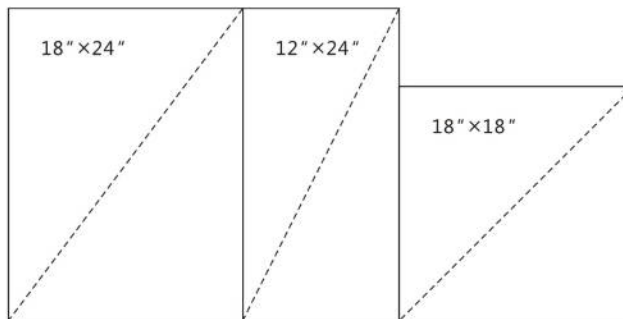
## Acoustic Dry back

Gauge: 3.5mm, 4.0mm

Wear layer: 0.15mm, 0.2mm, 0.3mm, 0.5mm

Pattern and color: Choose from our pool or customized acceptable for long term cooperation

◇ Size available:



# Acoustic

## Acoustic Strong Click

Gauge: 4.5mm, 5.0mm, 6.0mm

Wear layer: 0.15mm, 0.3mm, 0.5mm

Pattern and color: Choose from our pool or customized acceptable for long term cooperation

◇ Size available:

307mm×600mm

150mm×935mm

180mm×1220mm

# Acoustic

## Technical Data

Product	Acoustic Dry back	Acoustic Strong click	
Thickness	3.5mm, 4.5mm	4.5mm, 5.0mm, 6.0mm	
Wear Layer	0.1~0.7mm		0.1~0.7mm
Size Available	6inx36in / 7.25inx48in / 9inx48in 18inx18in / 18inx24in / 36inx36in (1in=25.4mm)	150x935mm, 180x1220mm 307x600mm (1in=25.4mm)	
Item	Standard	Unit	Result
Wear Layer Phthalate content	CPSC-CH-C1001-09.3		Phthalate free
Finish			CB coating
Abrasion	EN 660-2	mm <sup>3</sup>	<2.0
			Group T
Dimensional stability after exposure to heat	EN 434	%	≤0.15%
	ASTM F2199		
Curling after exposure to heat	EN 434	mm	≤1.2mm
Peel strength	EN 431	N/50mm	Res >38
			Com. >45
Flexibility	EN435		No Crack
Castor chair suitable	EN 425		suitable
Color fasten to light	ISO105-B02	-	≥6
Color fasten to heat	ASTM F1514	-	No change
Stain resistance	EN 423	Class	0
Residual Indentation	EN 433	-	Ave ≤8%
Fire Behavior	EN ISO 9239-1		BF <sub>1</sub> S <sub>1</sub>
VOC emission	CA Section 01350		Pass
Sound Rating	ASTM E2179	△IIC	≥22

# Wood



TLW-1067



TLW-1068





# Wood



TLW-1082



TLW-1083



TLW-1086



TLW-1054



TLW-1084



TLW-1085





# Wood



TLW-1059



TLW-1056

# Wood



TLW-1055



TLW-1058



TLW-1060



TLW-1057



TLW-1061



TLW-1050

# Wood



TLW-1066



TLW-1065



TLW-1094



TLW-1089



TLW-1092



TLW-1091



# Wood



TLW-1051



TLW-1052



TLW-1004



TLW-1008



TLW-1025



# Wood



TLW-1062



TLW-1077



TLW-1047



TLW-1053



TLW-1069



TLW-1007



# Wood



TLW-1029



TLW-1028



TLW-1026



TLW-1027



TLW-1074



TLW-1021





# Wood



TLW-1071



TLW-1073



TLW-1072



TLW-1070

# Wood



TLW-1049



TLW-1088



TLW-1087



TLW-1024



TLW-1093



# Wood



TLW-1045



TLW-1042



TLW-1040



TLW-1041



TLW-1043



TLW-1046

# Wood



TLW-1076



TLW-1080



TLW-1078



TLW-1079



TLW-1048



TLW-1075





# Wood



TLW-1023



TLW-1081

# Stone



TLS-2057



# Stone



TLS-2055



TLS-2056



TLS-2035



TLS-2054



TLS-2036



TLS-2027

# Stone



TLS-2038



TLS-2039



TLS-2040



TLS-2041



# Stone



TLS-2052



TLS-2053



TLS-2050



TLS-2051







# Stone



TLS-2028



TLS-2005



TLS-2026



TLS-2012

# Stone



TLS-2058



TLS-2037



TLS-2011



TLS-2015

# Stone



TLS-2030



TLS-2032



TLS-2033



TLS-2034





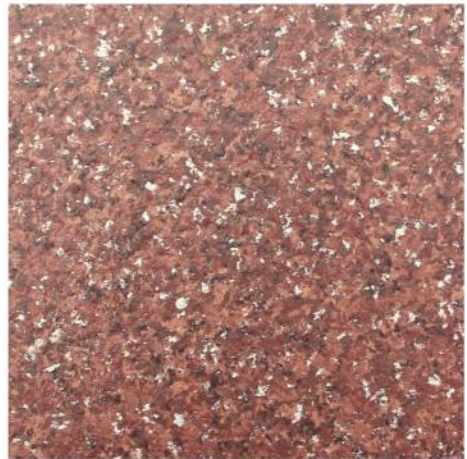
# Stone



TLS-2004



TLS-2008



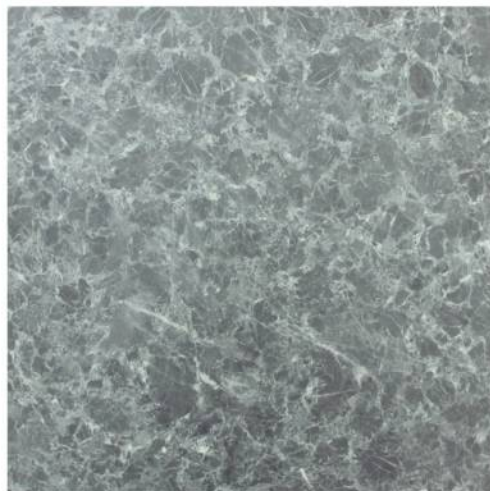
TLS-2010



# Stone



TLS-2020



TSL-2024



TLS-2031



TLS-2007

# Abstract



TLS-2042

# Abstract



TLS-2044



TLS-2045



TLS-2046



TLS-2047

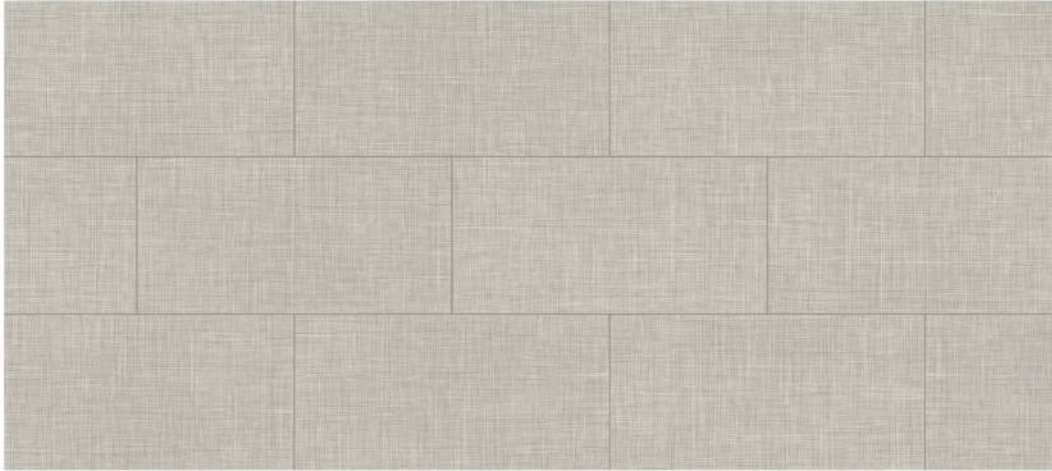


TLW-2048

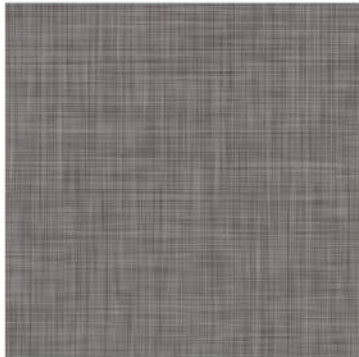


TLW-2049

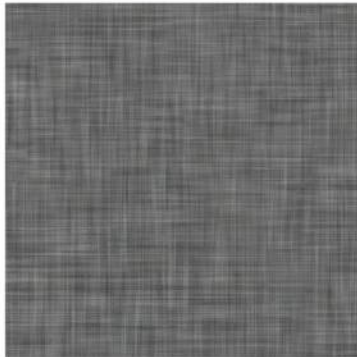
# Textile



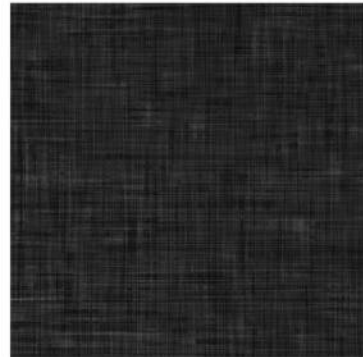
TLT-3025



TLT-3023



TLT-3024



TLT-3026





# Textile



TLT-3027



TLT-3028



TLT-3029

# Textile



TLT-3001



TLT-3002



TLW-3010



TLT-3009



TLW-3012



TLT-3007



# Textile



TLT-3004



TLT-3008



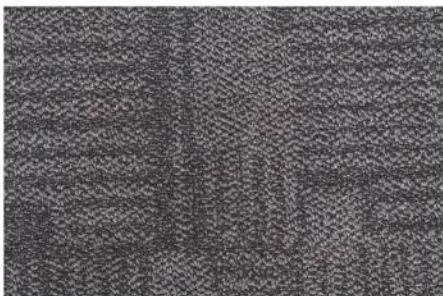
TLT-3017



TLT-3015



# Textile



TLT-3006



TLW-3022



TLT-3005



TLW-3018



TLT-3003



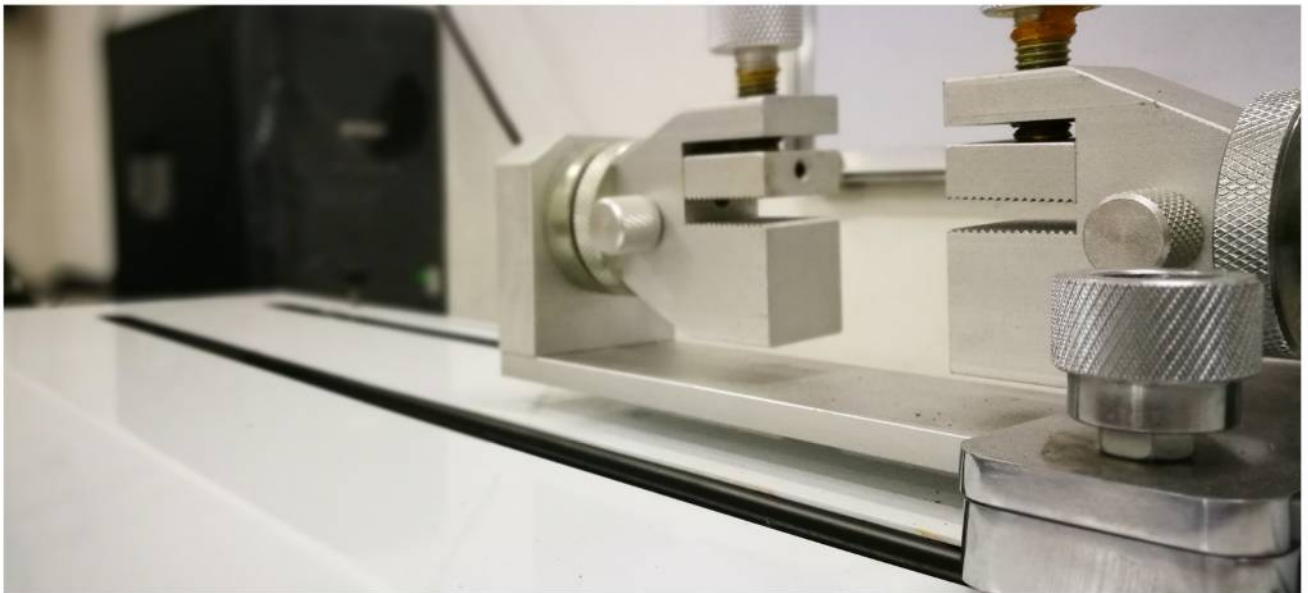
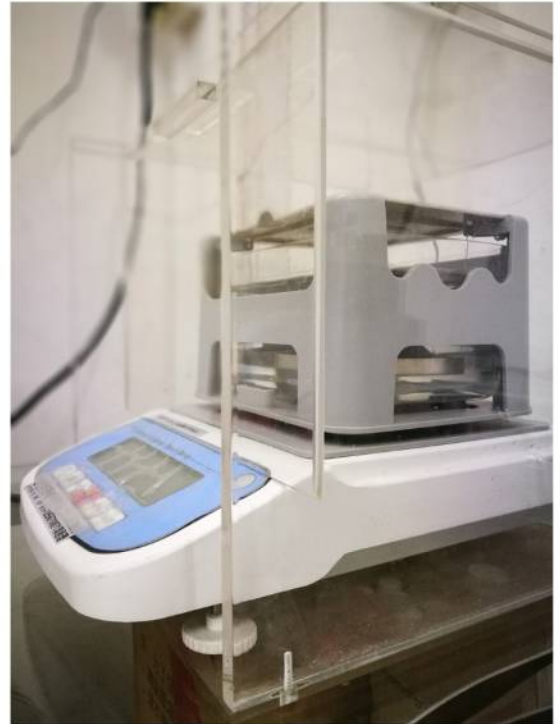
TLW-3021

## Quality

Tsinly offers premium quality. Our many years of experience provides the foundation for this combined with the relentless drive to further develop our expertise in all relevant areas. Our customers stay together with us because of the perfect quality. To name a few, the CB coating surface treatment, the strong click connection. We always believe that quality is what we should adhere to for long term development.

## Technology

Tsinly vinyl floors are distinguished by a functional composition and advanced technologies. We are the first factory produce strong rigid vinyl click since 2012. Our click systems guarantee easy installation and strong locking strength. All Tsinly vinyl floors are suitable for underfloor heating systems. Floors made of Ceramic Vinyl core are particularly water-resistant and therefore ideal for use in the bathroom and kitchen. Our wear class shows that the floors are also suitable for heavy duty use for residential, commercial and industrial areas.





## Sustainability

As a traditional LVT Flooring company, we hold our environment in the highest esteem. For us, living with a certain quality standard in the present must go hand in hand with responsibility to conserve the planet for future generations. We stand up to this responsibility with products that set standards in term of ecology with the materials used and their processing, production, packaging and also logistics. What is more, we have been actively committed to conserving the environment for years.

## Inspiration

Many people love and feel the inspiration behind products. That is why we expand energy and commitment to create new possibilities and realize convincing products. Developments from architecture and interior design that provide impetus, a feel for trends, stimuli from lifestyle, handcraft and art repeatedly inspire our product developers and designers to come up with new ideas. This is how creative design, installation patterns and finishes emerge, which allow our products to become trendsetter in flooring design.

## Health in the home

All Tsinly vinyl floors have low emissions and allergens and contribute towards an ecological balance thanks to their robust nature and long life. All Tsinly vinyl products are regularly tested providing excellent results, as a product tested for emissions, they therefore have building regulations approval. The special surface coating has a repellent effect against dirt and bacteria. Our products are very quiet and easy to clean, signifying that they are perfectly suitable for households with pets, children and allergy sufferers.



# Maintenance Tips for Luxury Vinyl Floor

The type or frequency of traffic on your Tile or Plank will determine the frequency of maintenance needed. The color of the floor will have some bearing on how much care may be necessary.

Regular adherence to an effective maintenance program should include:

Thorough dirt and grit regulation, Prompt removal of spills and stains, Protection of the floor surface. The most effective part of any floor maintenance program is the simplest: sweep, dust mop or vacuum DAILY, or more frequently if needed.

## **INITIAL MAINTENANCE:**

Sweep or vacuum thoroughly and remove any adhesive residue from surface. Mineral Spirits can be used.

Do not wash floor for at least 48 hours after installation. Lightly damp mop with a very diluted solution Vinyl Cleaner. Remove any scuffs and excessive soil by careful scrubbing.

Certain types of rubber heel marks may be removed by rubbing with a cloth dampened with a Vinyl Black Scuff/Adhesive Remover.

All traffic and furniture should stay off the floor for at least 24 hours to allow the adhesive to dry.

In order to prevent indentations and scratches, provide glass, plastic or other nonstaining cups with flat under surfaces not less than 2" in width for the legs of heavy furniture or appliance. Equip swiveled-type office chairs and other rolling furniture with broad surface non-staining casters at least 2" in diameter. Remove small diameter buttons from the legs of straight chairs and replace with metal glides that have bearing surfaces not less than 1" in diameter.

Protect your floor against burns. Burns from the glowing end of a cigarette, matches, or other extremely hot items can damage the Luxury vinyl floors.

Do not flood floor, subject to frequent standing water, or use in high moisture areas.

## **ROUTINE COMMERCIAL MAINTENANCE:**

TSINLY luxury vinyl Tile and Plank will perform commercially provided a sound maintenance program is followed.

Light daily sweeping, dust mopping or vacuuming will prevent dirt and grit particles from being ground into the surface of the tile.

Non-rubber, non-staining walk off mats should be used to control the amount of dirt and grit reaching the floor. The mats should be as wide as the doorway and thick enough to trap dirt and should be cleaned on a regular basis.

Frequent light mopping will prevent the floor from becoming heavily soiled and will remove most spills and stains.

The amount and type of traffic will dictate the frequency of washing. Wash the floor by damp mopping with neutral cleaner diluted with warm water.

If the floor receives hard use and becomes extremely dirty, as in heavily commercial installations, an occasional scrubbing may be necessary. This can be accomplished by using a low speed buffer 300 RPM or less with a red scrubbing-type (polyester or nylon) pad.

Spray the floor with diluted Neutral Cleaner and work the solution over the floor using the buffer and the scrubbing pad. Once this is



accomplished, remove the dirty residue by damp mopping with clear water or with a wet vacuum.

#### **STAIN REMOVAL**

To remove stubborn spots or stains from tiles/planks, always begin with mild cleaners, such as vinyl neutral cleaner. If this fails to remove stain, use mineral spirits. Do not use harsh solvents, such as Acetone, or lacquer thinner, as these type products can permanently soften and damage the surface.

For extreme staining, (paints, permanent markers, dyes) try applying fingernail polish remover containing Acetone (not straight Acetone) applied to soft cloth and rubbing. Any damage resulting from use of pure solvents IS NOT covered by our warranty.

Always test stronger cleaning agents on sample pieces or in unnoticeable areas first before attempting on affected areas.

#### **SCUFFING AND SCRATCHING:**

Although TSINLY Luxury Vinyl tiles/planks are resistant to scuffing and scratching, surface damage can occur with hard enough use, or if floor is improperly maintained. If damage occurs, try hand buffing the spot with 0000 steel wool, using a solution of mineral spirits. If damage is deep, try using 000 steel wool.

Please get installation instructions and warranty policy from our website or your local distributors.



[www.tsinly.com](http://www.tsinly.com)